

saromi™
combinations unexpected



HALDEN
(VOL -2)



HALDEN | 913



VELVETO | 946



VELVETO | 941



HALDEN | 914



VELVETO | 917



VELVETO | 944



HALDEN | 915



VELVETO | 913



VELVETO | 953



HALDEN | 916



VELVETO | 964



VELVETO | 963



HALDEN | 917



VELVETO | 961



VELVETO | 962



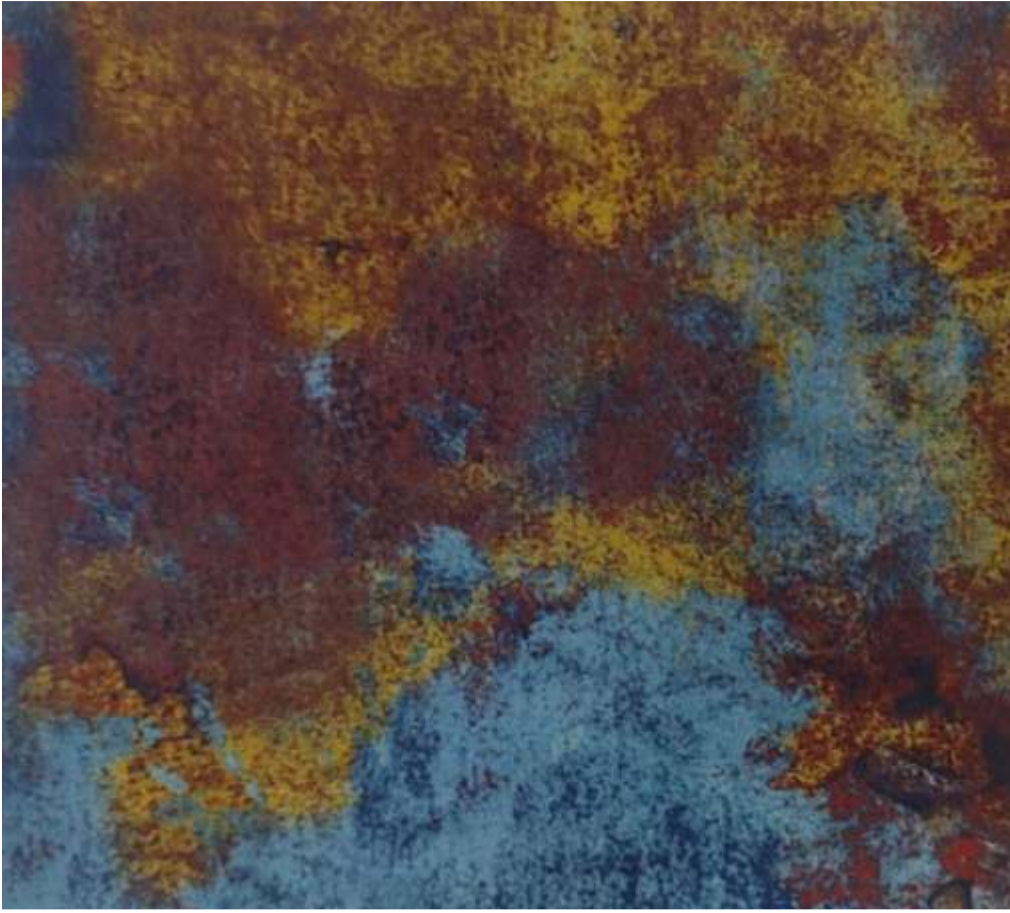
HALDEN | 918



VELVETO | 928



VELVETO | 970



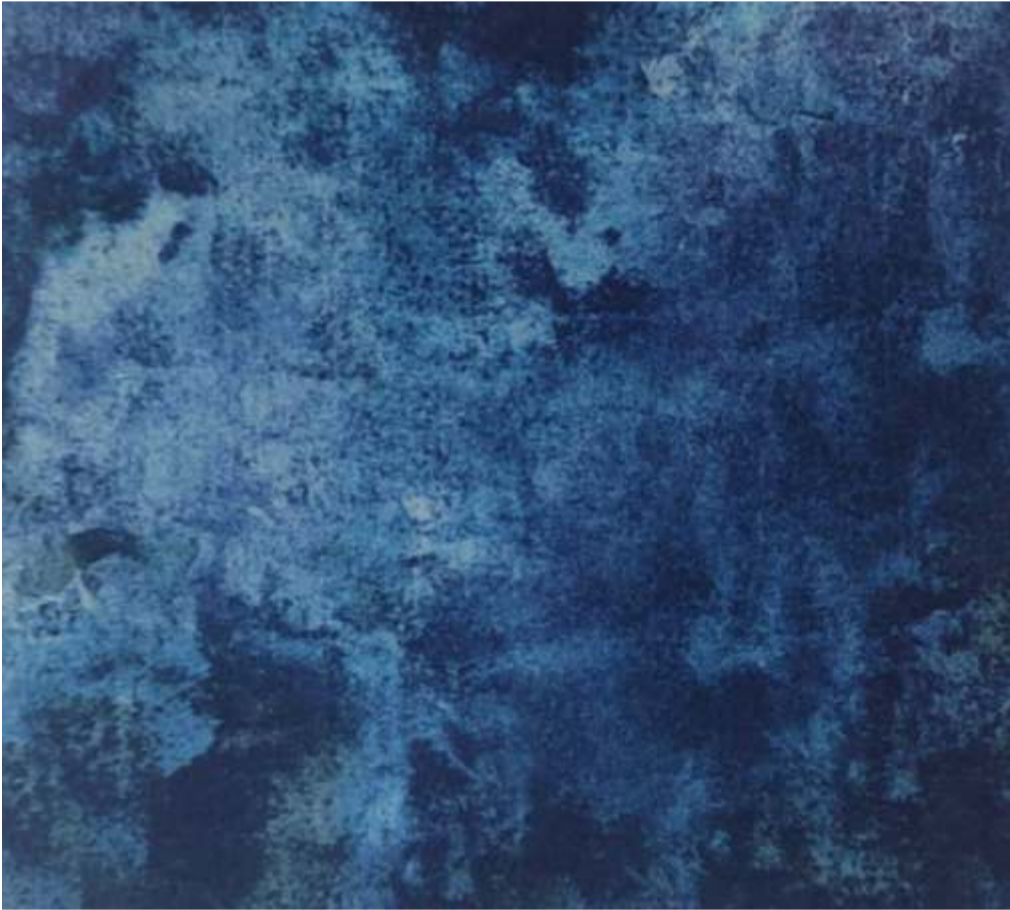
HALDEN | 919



VELVETO | 971



VELVETO | 917



HALDEN | 920



VELVETO | 968



VELVETO | 971



HALDEN | 921



VELVETO | 923



VELVETO | 945



Wash Care Instructions

Wash care instructions need to be followed for prolonged usage of fabric, otherwise will damage the fabric. Test results were gathered from various samples and therefore represent average indicative values. Discolouration caused by clothing fabrics such as jeans does not represent a material defect. Minor colour deviations & discolouring in context of permissible industrial tolerance standards.

DESIGN	WIDTH	GSM	V-REPEAT	H-REPEAT	COMPOSITION	MARTINDALE	COLOUR FASTNESS TO LIGHT	WASHING INSTRUCTION	END USE
HALDEN	143 CM	330	52.0 CMS	46 CMS	100% POLYESTER	100000	4 - 5	☒ ☒ ☒ ☒ ☒ ☒ ☒	☒ ☒ ☒
VELVETO	140 CM	350	NA	NA	100% POLYESTER	70000	4-5	☒ ☒ ☒ ☒ ☒ ☒ ☒	☒ ☒
WASHING INSTRUCTION					END USE				
☒ Don't Wash	☒ Don't Tumble	☒ Do Not Iron	☒ Upholstery		☒ Curtain		Color may vary from batch to batch Complimentary sample, Not for Sale		
☒ Don't Bleach	☒ Hang Dry	☒ Vaccum Clean	☒ Cushion						
☒ Dry clean									

Product Color May Slightly Vary From Original Due To Photographic Lighting Sources Or Your Screen Settings.



saromi™
combinations unexpected



HALDEN
(VOL -2)